

Fingertip Pulse Oximeter

ChoiceM Med

USER MANUAL

General Description

Oxygen binds to hemoglobin in red blood cells when moving through the lungs. It is transported throughout the body as arterial blood. A pulse oximeter uses two frequencies of light (red and infrared) to determine the percentage (%) of hemoglobin in the blood that is saturated with oxygen. The percentage is called blood oxygen saturation, or SpO₂. A pulse oximeter also measures and displays the pulse rate at the same time it measures the SpO₂ level.

Measurement Principle

Principle of the oximeter is as follows: The pulse oximeter works by applying a sensor to a pulsating arteriolar vascular bed. The sensor contains a dual light source and photo detector. The one wavelength of light source is 660nm, which is red light; the other is 905nm, which is infrared-red light. Skin, bone, tissue and venous vessels normally absorb a constant amount of light over time. The photo detector in finger sensor collects and converts the light into electronic signal which is proportional to the light intensity. The arteriolar bed normally pulsates and absorbs variable amounts of light during systole and diastole, as blood volume increases and decreases. The ratio of light absorbed at systole and diastole is translated into an oxygen saturation measurement. This measurement is referred to as SpO₂.

Diagram of Operation Principle

1. Red and Infrared-ray Emission Tube
2. Red and Infrared-ray Receipt Tube



Precautions For Use

1. Before use, carefully read the manual.
2. Operation of the fingertip pulse oximeter may be affected by the use of an electrosurgical unit (ESU).
3. The fingertip pulse oximeter must be able to measure the pulse properly to obtain an accurate SpO₂ measurement. Verify that nothing is hindering the pulse measurement before relying on the SpO₂ measurement.
4. Do not use the fingertip pulse oximeter in an MRI or CT environment.
5. Do not use the fingertip pulse oximeter in situations where alarms are required. The device has no alarms. It is not for continuous monitoring.
6. Do not use the fingertip pulse oximeter in an explosive atmosphere.
7. The fingertip pulse oximeter is intended only as an adjunct in patient assessment. It must be used in conjunction with other methods of assessing clinical signs and symptoms.
8. In order to ensure correct sensor alignment and skin integrity, the maximum application time at a single site for our device should be less than half an hour.
9. Do not sterilize the device using autoclaving, ethylene oxide sterilizing, or immersing the device in liquid. The device is not intended for sterilization.
10. Follow local ordinances and recycling instructions regarding disposal or recycling of the device and device components, including batteries.
11. This equipment complies with IEC 60601-1-2:2014 for electromagnetic compatibility for medical electrical equipment and/or systems. However, because of the proliferation of radio-frequency transmitting equipment and other sources of electrical noise in healthcare and other environments, it is possible that high levels of such interference due to close proximity or strength of a source might disrupt the performance of this device.
12. Portable and mobile RF communications equipment can affect medical electrical equipment
13. This equipment is not intended for use during patient transport outside the healthcare facility.
14. This equipment should not be used adjacent to or stacked with other equipment.
15. It may be unsafe to:
 - use accessories, detachable parts and materials not described in the instructions for use
 - interconnect this equipment with other equipment not described in the instructions for use
 - disassemble, repair or modify the equipment
16. These materials that contact with the patient's skin contain medical silicone and ABS plastic enclosure are all pass the ISO10993-5 Tests for invitro cytotoxicity and ISO10993-10 Tests for irritation and delayed-type hypersensitivity.
17. When the signal is not stable, the reading may inaccurate. Please do not reference.

Rx only: "Caution: Federal law (USA) restricts this device to sale by or on the order of a licensed practitioner."

Contraindication

It is not for continuous monitoring.

Inaccurate measurements may be caused by

1. Significant levels of dysfunctional hemoglobin (such as carbonyl - hemoglobin or methemoglobin).
2. Intravascular dyes such as indocyanine green or methylene blue.
3. High ambient light. Shield the sensor area if necessary.
4. Excessive patient movement.
5. High-frequency electrosurgical interference and defibrillators.
6. Venous pulsations.
7. Placement of a sensor on an extremity with a blood pressure cuff, arterial catheter, or intravascular line.
8. The patient has hypotension, severe vasoconstriction, severe anemia, or hypothermia.
9. The patient is in cardiac arrest or is in shock.
10. Fingernail polish or false fingernails.
11. Weak pulse quality (low perfusion).
12. Low hemoglobin.

Product Features

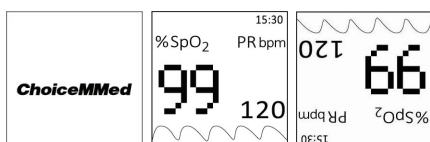
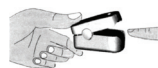
1. Simple to operate and convenient to carry.
2. Small volume, light weight and low power consumption.
3. Colorful color OLED displays SpO₂, PR and waveform.
4. 2 display modes.
5. 2pcs AAA-size alkaline batteries; battery-low indicator.
6. Smart BLE 4.0 for data transmission.
7. Automatically power on/off.
8. Weak or unstable signal prompt provides more accurate measurements.
9. When no signal or low signal is detected, it will display "finger out" and will power off automatically in 8 seconds.

Intended Use

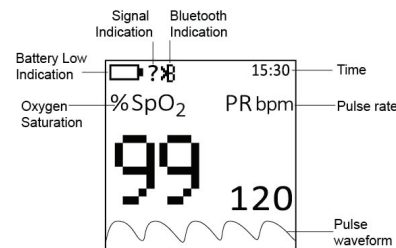
The Fingertip Pulse Oximeter is a handheld non-invasive device intended for spot-checking of oxygen saturation of arterial hemoglobin (SpO₂) and Pulse Rate of adult, adolescent and child patients in hospitals, hospital-type facilities.

Operation Instructions

1. Install two AAA batteries according to the Battery Installation instructions.
2. Place one of your fingers into the rubber opening of the Pulse Oximeter. The device will turn on automatically. It goes from the startup screen to the measurement interface.
3. Keep your hands still for the reading. Do not shake your finger during the test. It is recommended that you do not move your body while taking a reading.
4. Read the data.
5. Press the power button to switch the display mode.



Reading your results



Note:

If the measurement exceeds the limit (SpO₂<90%、PR<60bpm or PR>100bpm), the color of the measurement becomes orange.

Setting

Press and hold the power button, enter the setting interface. Press the power button to choose the item, press and hold the power button enter into the submenu; press the power button to choose the item that you need. Press and hold the power button to confirm and return to the setting interface.

Bluetooth

1. Work mode of Bluetooth: Real-time, Spot check.
2. When the Bluetooth icon stop flashing, it means the Pulse Oximeter sync with the APP successfully.
3. Under the real-time mode: when the reading stable, the data has been uploaded to the APP continually. When you plug out your finger, it will display "finger out" and will power off automatically in 8 seconds.
4. Under the Spot check mode: when the reading stable, the data has been uploaded to the APP successfully. The Pulse Oximeter will power off automatically after the data shows on the screen about 8 seconds.

Language

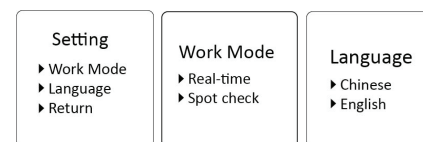
The Pulse Oximeter supports Chinese and English for user to choose.

Return

Press the power button to choose "Return", press and hold the power button return to the measurement interface.

Note

Under the setting interface, when on operation is detected, it will return to the measurement interface automatically 8 seconds later.

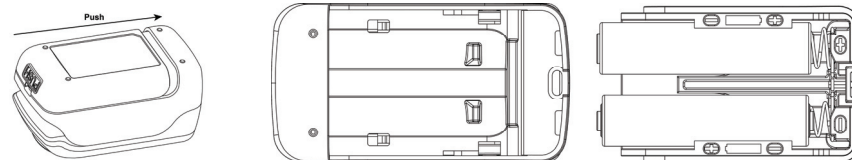


Battery Installation

1. Push the battery door horizontally along the arrow to open the battery door.
2. Install two AAA batteries into the battery compartment. Match the plus (+) and minus (-) signs in the compartment. If the polarities are not matched, damage may be caused to the oximeter.
3. Close the battery door.

Notes:

- ✦ Please remove the batteries if the pulse oximeter will not be used for long periods of time.
- ✦ Please replace the battery when the power indicator starting flickering.

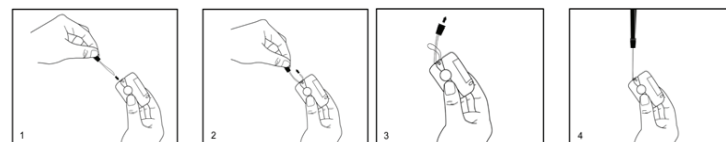


Using the Lanyard

1. Thread thinner end of the lanyard through the hanging hole.
2. Thread thicker end of the lanyard through the threaded end before pulling it tightly.

Warnings!

- ✦ Keep the oximeter away from young children. Small items such as the battery door, battery, and lanyard are choking hazards.
- ✦ Do not hang the lanyard from the device's electrical wire.
- ✦ Please notice that the lanyard which is tied to the oximeter may cause strangulation due to excessive length.



Maintenance and Storage

1. Replace the batteries in a timely manner when low voltage lamp is lighted.
2. Clean surface of the fingertip oximeter before it is used in diagnosis for patients.
3. Remove the batteries if the oximeter is not operated for a long time.
4. It is best to store the product in -40°C~+55°C and 15%~93% humidity.
5. Keep in a dry place. Extreme moisture may affect oximeter lifetime and may cause damage.
6. Dispose of battery properly; follow any applicable local battery disposal laws.

Cleaning the fingertip pulse oximeter

Please use medical alcohol to clean the silicone touching the finger inside of oximeter with a soft cloth dampened with 70% isopropyl alcohol. Also clean the being tested finger using alcohol before and after each test. Do not pour or spray liquids onto the oximeter, and do not allow any liquid to enter any openings in the device. Allow the oximeter to dry thoroughly before reuse.

The fingertip pulse oximeter requires no routine calibration or maintenance other than replacement of batteries.

Disinfecting

The applied parts touching the patients' body are required to be disinfected once after each use. The recommended disinfectants include: ethanol 70%, isopropanol 70%, glutaraldehyde-type 2% liquid disinfectants.

Disinfection may cause damage to the equipment and is therefore not recommended for this pulse oximeter unless otherwise indicated in your hospital's servicing schedule. Clean the pulse oximeter before disinfecting it.

CAUTION: Never use EtO or formaldehyde for disinfection.

The use life of the device is five years when it is used for 15 measurements every day and 10 minutes per one measurement. Stop using and contact local service center if one of the following cases occurs:

- An error in the *Possible Problems and solutions* is displayed on screen.
- The oximeter cannot be powered on in any case and not the reasons of battery.
- There is a crack on the oximeter or damage on the display resulting readings cannot be identified; the spring is invalid; or the key is unresponsive or unavailable.

Specifications

1. Display Type

OLED display

2. SpO₂

Display range: 0%~100%

Measurement range: 70%~100%

Accuracy: 70%~100% ± 2% ; 0%~69% no definition
Resolution: 1%

Note: A functional tester cannot be used to assess the accuracy of a pulse oximeter monitor or sensor. Clinical testing is used to establish the SpO₂ accuracy. The measured arterial hemoglobin saturation value (SpO₂) of the sensors is compared to arterial hemoglobin oxygen (SaO₂) value, determined from blood samples with a laboratory CO-oximeter. The accuracy of the sensors in comparison to the CO-oximeter samples measured over the SpO₂ range of 70%~100%. Accuracy data is calculated using the root-mean-squared (Arms value) for all subjects, per ISO 9919:2005, Medical Electrical Equipment - Particular requirements for the basic safety and essential performance of pulse oximeter equipment for medical use.

A functional tester is used to measure how accurately Fingertip Pulse Oximeter is reproducing the specified calibration curve and the PR accuracy.

The model of functional tester is Index2 FLUKE simulator and the version is 2.1.3.

3. Pulse Rate

Display range: 30bpm~250bpm

Measure range: 30bpm~250bpm

Accuracy: 30bpm~99bpm, ±2bpm; 100bpm~250bpm, ±2%

Resolution: 1bpm

4. Probe LED Specifications

	Wavelength	Radiant Power
RED	660±3nm	3.2mw
IR	905±10nm	2.4mw

NOTE: The information about wavelength range can be especially useful to clinicians.

5. Power Requirements

Two AAA alkaline Batteries

Power consumption: Less than 40mA

Battery Life:

Real-time: Two AAA 1.5V, 1200mAh alkaline batteries could be continuously operated as long as 18 hours.

Spot check: It is used for 2000 measurements and 30 seconds per one measurement.

6. Environment Requirements

Operation Temperature: 5°C~40°C

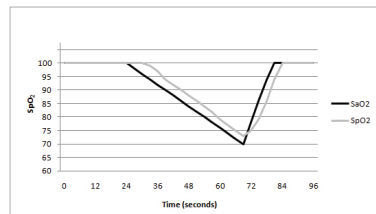
Storage Temperature: -40°C~+55°C

Ambient Humidity: 15%~80% no condensation in operation; 15%~93% no condensation in storage/transport

Atmosphere pressure: 70kPa~106kPa

7. Equipment data update period

As shown in the following figure. Data update period of slower average is 8s.



8. Classification

According to the type of protection against electric shock: INTERNALLY POWERED EQUIPMENT;

According to the degree of protection against electric shock: TYPE BF APPLIED PART, (applied part: the rubber hole of the device);

According to the degree of protection against ingress of dust and water: IP32

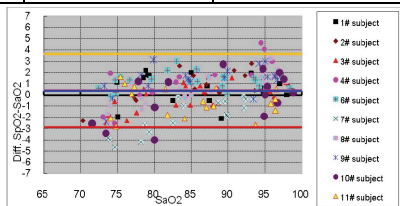
According to the mode of operation: CONTINUOUS OPERATION

Clinical Study Summary

The following details are provided to disclose actual performance observed in the clinical validation study of healthy adult volunteers. The ARMS value analysis statement and Bland-Altman plot of data is shown as following:

ARMS Value Analysis Statement

Item	90--100	80--<90	70--<80
#pts	78	66	63
Bias	1.02	0.40	-0.48
ARMS	1.66	1.46	1.93



Bland-Altman Plot Graphic

Declaration

Guidance and Manufacturer's declaration – electromagnetic emissions-For all EQUIPMENT and SYSTEMS

Guidance and Manufacturer's declaration - electromagnetic emission

The Pulse Oximeter is intended for use in the electromagnetic environment specified below. The customer or the user of Pulse Oximeter should assure that it is used in such an environment.

Emission test	Compliance	Electromagnetic Environment – guidance
RF emissions CISPR 11	Group 1	The Pulse Oximeter uses RF energy only for its internal function. Therefore, its RF emissions are very low and are not likely to cause any interference in nearby electronic equipment.
RF emissions CISPR 11	Class B	The pulse Oximeter is suitable for use in all establishments, including domestic establishments and those directly connected to the public low-voltage power supply network that supplies buildings used for domestic purposes.
Harmonic emissions IEC 61000-3-2	Not Applicable	
Voltage fluctuations/ flicker emissions IEC 61000-3-3	Not Applicable	

Guidance and Manufacturer's declaration – electromagnetic immunity-For all EQUIPMENT and SYSTEMS

Guidance and Manufacturer's declaration - electromagnetic immunity

The Pulse Oximeter is intended for use in the electromagnetic environment specified below. The customer or the user of the Pulse Oximeter should assure that it is used in such an environment.

Immunity test	IEC 60601 test level	Compliance Level	Electromagnetic Environment – guidance
Electrostatic Discharge (ESD) IEC 61000-4-2	+/- 6kV contact +/- 8kV air	+/- 6kV contact +/- 8kV air	Floors should be wood, concrete or ceramic tile. If floor are covered with synthetic material, the relative humidity should be at least 30%.
Power frequency (50/60 Hz) magnetic field IEC 61000-4-8	3A/m	3A/m	Power frequency magnetic fields should be at levels characteristics of a typical location in a typical commercial or hospital environment.

Guidance and Manufacturer's declaration – electromagnetic immunity-

For all EQUIPMENT and SYSTEMS that are not LIFE-SUPPORTING

Guidance and Manufacturer's declaration - electromagnetic immunity

The Pulse Oximeter is intended for use in the electromagnetic environment specified below. The customer or the user of the Pulse Oximeter should assure that it is used in such an environment.

Immunity test	IEC 60601 test level	Compliance Level	Electromagnetic Environment – guidance

Radiated RF IEC 61000-4-3	3 V/m 80 MHz to 2.5 GHz	3 V/m	Portable and mobile RF communications equipment should be used no closer to any part of the Pulse Oximeter, including cables, than the recommended separation distance calculated from the equation applicable to the frequency of the transmitter. Recommended separation distance $d=1.2\sqrt{P}$ 80 MHz to 800 MHz $d=2.3\sqrt{P}$ 800 MHz to 2.5 GHz Where P is the maximum output power rating of the transmitter in watts (W) according to the transmitter manufacturer and d is the recommended separation distance in meters (m). Field strengths from fixed RF transmitters, as determined by an electromagnetic site survey ^a , should be less than the compliance level in each frequency range. ^b Interference may occur in the vicinity of equipment marked with the following symbol:

NOTE 1 At 80 MHz and 800 MHz, the higher frequency range applies.

NOTE 2 These guidelines may not apply in all situations, Electromagnetic propagation is affected by absorption and reflection structures, objects and people.

a Field strengths from fixed transmitters, such as base station for radio (cellular/cordless) telephones and land mobile radios, amateur radio, AM and FM radio broadcast and TV broadcast cannot be predicted theoretically with accuracy. To assess the electromagnetic environment due to fixed RF transmitters, an electromagnetic site survey should be considered. If the measured field strength in the location in which the Pulse Oximeter should be observed to verify normal operation. If abnormal performance is observed, additional measurements may be necessary, such as reorienting of the relocating the Pulse Oximeter.

b Over the frequency range 150 kHz to 80 MHz, fields strengths should be less than 3 V/m

Recommended separation distances between portable and mobile RF communications equipment and the EQUIPMENT or SYSTEMS - For all EQUIPMENT and SYSTEMS that are not LIFE-SUPPORTING

Recommended separation distances between portable and mobile RF communications equipment and Pulse Oximeter		
The Pulse Oximeter is intended for use in electromagnetic environment in which radiated RF disturbances are controlled. The customer or the user of the Pulse Oximeter can help prevent electromagnetic interference by maintaining a minimum distance between portable and mobile RF communications equipment (transmitters) and the Pulse Oximeter as recommended below, according to the maximum output power of the communications equipment.		
Rated maximum output power of transmitter (W)	Separation distance according to frequency of transmitter (m)	
	80 MHz to 800 MHz $d=1.2\sqrt{P}$	800 MHz to 2.5 GHz $d=2.3\sqrt{P}$
0.01	0.1167	0.2334
0.1	0.3689	0.7378
1	1.1667	2.3334
10	3.6893	7.3786
100	11.6667	23.3334
For transmitters rated at a maximum output power not listed above, the recommended separation distance in meters (m) can be estimated using the equation applicable to the frequency of the transmitter, where P is the maximum output power rating of the transmitter in watts (W) according to the transmitter manufacturer.		
NOTE 1 At 80 MHz and 800 MHz, the separation distance for the higher frequency range applies.		
NOTE 2 These guidelines may not apply in all situations. Electromagnetic propagation is affected by absorption and reflection from structures, objects and people.		

Possible Problems and Solutions

Problems	Possible reason	Solution
SpO ₂ or PR can not be shown normally	1. Finger is not inserted correctly 2. Patient's SpO ₂ value is too low to be measured	1. Retry by inserting the finger 2. There is excessive illumination 3. Try some more times. If you can make sure no problem exist in the product, please go to a hospital timely for exact diagnosis.
SpO ₂ or PR is shown unstably	1. Finger might not be inserted deep enough. 2. Excessive patient movement	1. Retry by inserting the finger 2. Be calmness
The oximeter cannot be powered on	1. No battery or low power of battery 2. Batteries might be installed incorrectly 3. The oximeter might be damaged	1. Please replace batteries 2. Please reinstall the batteries 3. Please contact with local customer service centre
Indication lamps are suddenly off	1. The product is automatically powered off when no signal is detected longer than 8 seconds 2. The battery power is too low to work	1. Normal 2. Replace the batteries
"Error7" is displayed on screen	Err 7 means all the emission LED or reception diode is damaged.	Please contact with local customer service centre

Symbol Definitions

Symbol	Definition	Symbol	Definition
	Type BF applied part.		Attention
	Follow instruction for use		Oxygen saturation
PR bpm	Pulse rate (BPM)		Low power indication
	No SpO ₂ Alarm	SN	Serial No.
	Storage temperature and relative humidity	IP32	The degree of protection against ingress of dust and water
	Date of Manufacture		Manufacturer's information
	Conformity to WEEE Directive		

Box Contents

- Fingertip pulse oximeter
- One lanyard
- Two AAA batteries
- One instruction manual

Applicable Models

MD300CI218

Notes:

- The illustrations used in this manual may differ slightly from the appearance of the actual product.
- The specifications are subject to change without prior notice.

ALL RIGHTS RESERVED

Revised Date: June 21, 2017

Version: Ver1.0